



Steel frames

NEW: Final powder coating in 6 inexpensive preferred colours





- 4 Hörmann brand quality
- 6 Good reasons to try Hörmann
- 8 Residential construction
- 9 Hotels
- 10 Hospitals
- 11 Authorities, offices and public buildings
- 12 Schools and nurseries
- 13 Frame without face
- 14 Steel profile frame VarioFix
- 16 Sliding doors
- 18 Individual frame types
- 20 Hinge constructions
- 21 Lock plates and sound-absorbing seals
- 23 Hörmann product range

The colours and surface finishes shown are subject to the limitations of the printing process and cannot be regarded as binding.

All rights reserved. No part may be reproduced without our prior permission. Subject to changes.

◀ Aluminium tubular frame construction project doors with steel frame

Hörmann brand quality

Top safety and reliability



“White Pearl” apartment building, Timmendorfer Strand with Hörmann products



In-house product development

Frame functions necessitate continuous new developments and improvements in construction and equipment. In this area, our qualified development teams time and again prove their great specialised expertise. Hörmann has continued to extend its steel frame programme, resulting in today's complete range.



Highly sophisticated production methods

As a part of quality, environmental, energy and occupational safety management, Hörmann frames are manufactured in accordance with DIN EN ISO 9001, 14001, 50001 and BS OHSAS 18001. These are necessary prerequisites for optimum and individual project solutions.



As Europe's leading manufacturer of doors, operators and frames, we are committed to high product and service quality. This is how we set standards on an international scale.

Highly specialised factories develop and manufacture construction components that are characterised by excellent quality, functional safety and a long service life.

Our presence in the global economy's key regions makes us a strong, future-oriented partner for industrial and public construction projects.



Simple planning

The Hörmann Architects' Program provides faster access to texts for invitation to tenders and drawings (in DWG and PDF format) of over 850 Hörmann products. It is available to you as a web version at www.hoermann.co.uk/forums/architects-forum/architects-program or can be downloaded free-of-charge from the Hörmann Architects' Forum.



Expert building support

Experienced specialists within our customer-oriented sales organisation accompany you from the planning stage, through technical clarification up to the final building inspection. Expert fitting is guaranteed by experienced Hörmann fitters and the specialised trained staff of Hörmann's partners.

Good reasons to try Hörmann

The frame specialist with decades of experience



1

High-quality processing

State-of-the-art production technology ensures **dimensionally accurate frame elements with precise fittings** and functional parts. For all 1-part standard frames, the mitre is produced with **laser welding / INEW**. This ensures a sturdy connection of the individual parts and creates a **clean weld seam**, which is **additionally polished**. This process results in steel frames that impress with appealing design, flush surface and long-lasting quality.



2

Simple and fast fitting

The **sturdy universal trapezoidal anchor** for double-shell steel frames with special hole pattern enables the fitting of frames in all wall types. Drilling in solid walls or cutting out of plasterboard is not required in the standard sizes. The Hörmann **steel profile frame VarioFix** is fitted like a timber frame and is additionally distinguished by its long service life and elegant shape without visible foldback. Additionally, different wall thicknesses can be compensated for thanks to the adjustable decorative rebate up to 20 mm. For further information, see page 15.



3

Highest design demands

The **frame without face** is the design solution for modern interior architecture. The combination of a narrow frame face, integrated door closer and concealed hinges results in a **minimalist door view** and meets the **highest design requirements**.



4

Exclusive glass door view

The **elegant solution for glass doors** features a flush-fitting view of the frame face and glass door leaf as well as a hinge and locking system. This creates **maximum transparency and an exclusive door view**.

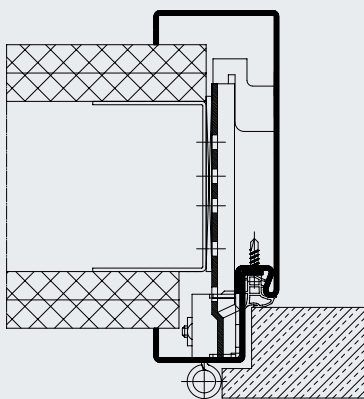
Residential construction

Secure, easy-to-fit and long-lasting

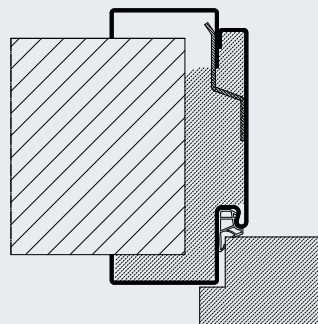


Double-shell frames for all wall types

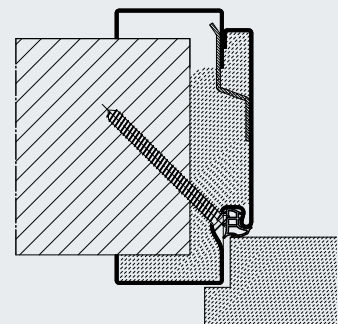
Steel frames are long-lasting, timeless and modern design elements for residential construction. Powdered steel frames are made to look like timber frames. The welded and flush polished corner joints mean that there are no visible mitre cuts. With the double-shell steel profile frame VarioFix, Hörmann offers an innovative solution: The familiar timber frame fitting principle of wall width adjustment in the decorative rebate is now available for steel frames. Further information on the VarioFix can be found on pages 14 to 15.



Double-shell frame without wall width adjustment, rebated



VarioFix steel profile frame, rebated, with sound-absorbing seal for improved acoustic insulation.



Steel profile frame VarioFix, rebated, for Hörmann residential doors WAT with RC 2 / RC 3 security equipment

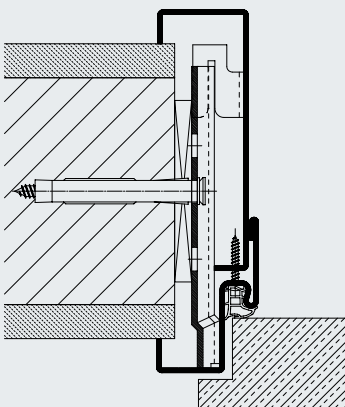
Hotels

Sturdy and with individual designs

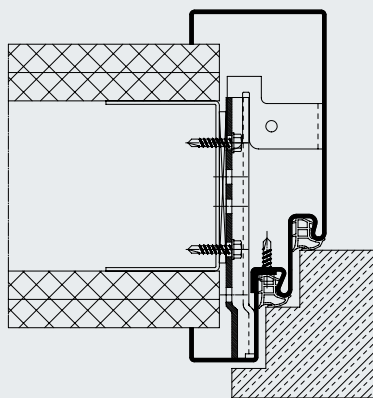


Passages and doors in hotels and B&Bs must withstand the greatest strains. Architectural demands also require individual designs and colours. The primed, paintable or powder-coated Hörmann steel frames perfectly fulfil these requirements and are maintenance-free and extremely durable.

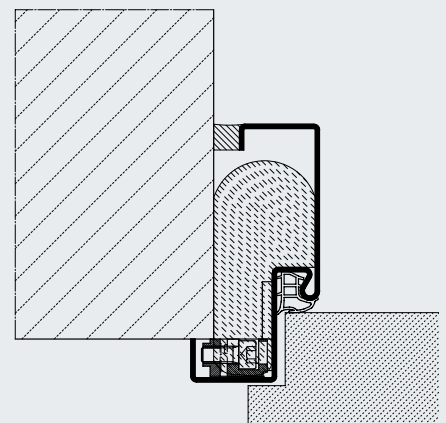
Single-shell and double-shell frame for all wall types



Double-shell frame with wall width adjustment, rebated



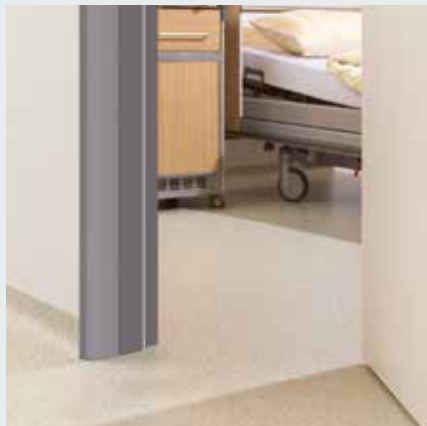
Double-shell frame with double rebate, rebated



1-part corner frame without anchor for retrofitting, rebated

Hospitals

Impact-resistant and easy to clean

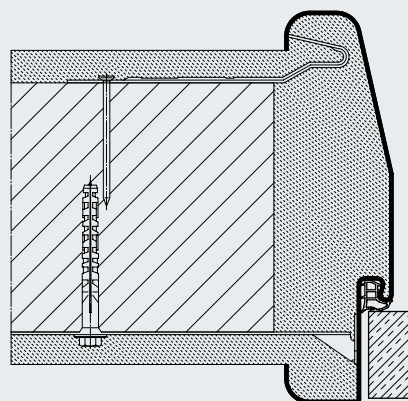


Frame with chamfered reveal

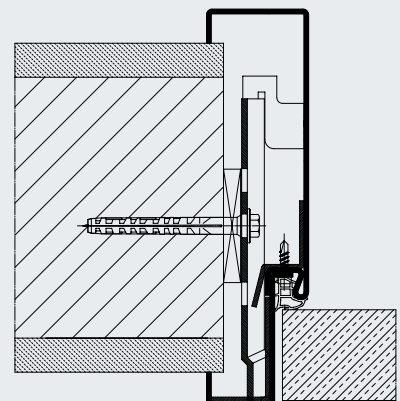
Door frames made of steel are the right solution for diverse, demanding tasks in hospitals. For example, thanks to a larger opening width, frames with a chamfered reveal make it easier to move beds through doorways. Hörmann steel and stainless steel frames meet the efficiency, cleanliness and hygiene requirements found in an everyday clinic environment.



Stainless steel frame



1-part brickwork frame with rounded reveal, flush



Double-shell frame with lead insert, flush

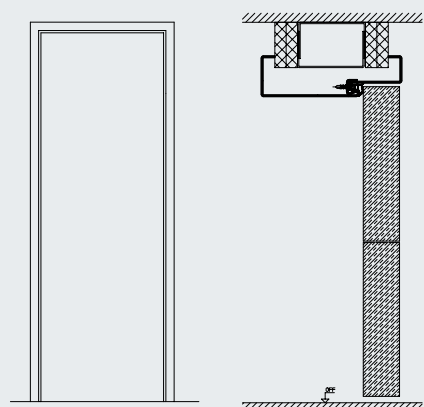
Authorities, offices and public buildings

The efficient solution for highly frequented areas

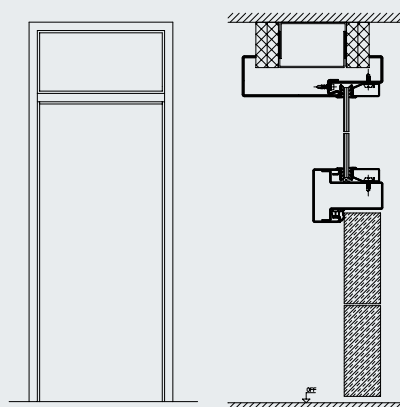


Frame prepared for overhead door closer

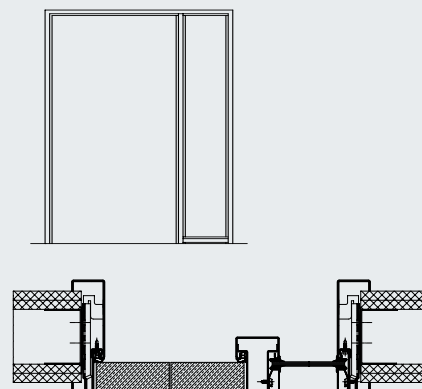
Hörmann has the right frames for high-frequency office areas as well as high demands on robustness and security. Additional side elements and transom lights ensure bright rooms. These pre-assembled frames are also available as a VarioFix frame (see page 14 – 15).



Room-high profile frame



Profile frame with transom light



Profile frame with side element

Schools and nurseries

For a lower risk of injury

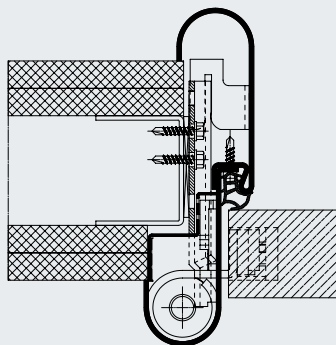


Round-style frame with VR 120 hinge (open)

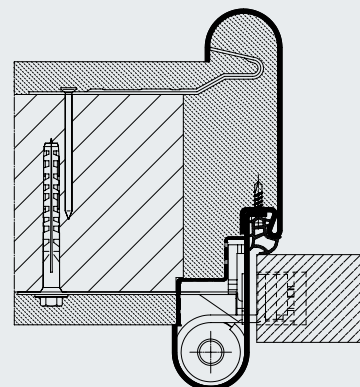


Round-style frame with VR 120 hinge (closed)

Frames for schools and nurseries have especially high safety standards: Hörmann's round-style frame with finger trap protection on the secondary closing edge of the hinge side reduces the danger of crushing or injuries.



Double-shell "round-style VR" frame, flush, for partition walls



Double-shell "round-style VR" frame, flush, for brickwork

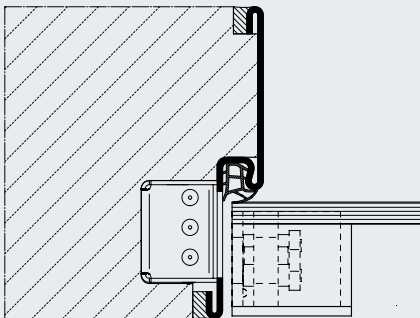
Frame without face

For a flush-fitting appearance

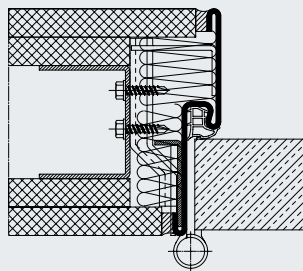


Filigreed guide roller

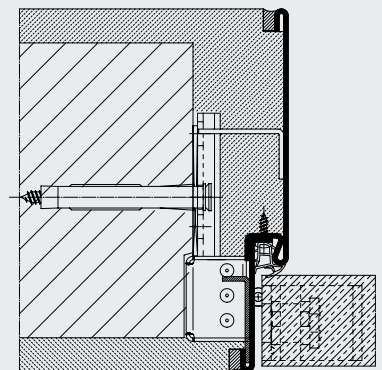
With its narrow frame face, the frame without face can be incorporated harmoniously into modern living concepts. With concealed hinges or filigreed guide rollers, it also meets the highest design demands.



1-part frame, flush, glass door hinge



1-part frame, flush, for partition walls, hinge system VN 2927 / 160 Compact Planum



Double-shell frame, flush, for brickwork, concealed hinge

Steel profile frame VarioFix

The robust and elegant alternative to the timber frame



For the Hörmann steel profile frame VarioFix, wall tolerances of up to 20 mm are no problem: The adjustable decorative rebate compensates for different wall thicknesses during renovations and new construction projects. Only the VarioFix frame offers high resistance and an elegant shape coupled with the fitting principle of timber frames. With its aesthetic and modern design, the steel profile frame is suitable for use in both private and commercial spaces.



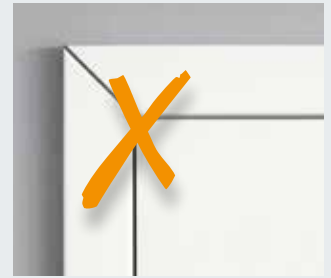
High-quality design

In contrast to conventional steel frames, for the VarioFix frame the wall width adjustment is not made in the area visible from outside. This way, **an additional unattractive foldback is avoided**. Furthermore, the corner joints of powder-coated steel frames feature high-quality welding and a flush polish, meaning there are **no visible mitre cuts** in contrast to a timber frame. The **VarioFix frame also harmonises perfectly with other timber frames due to the frame face of 55 mm on both sides**.

The VarioFix frame is available in RAL 9016 and in RAL 9010 at the same price, to match Hörmann residential doors with a Duradecor surface finish. **For a very harmonious frame view, we offer you the version with white sound-absorbing seal as standard**. The frames are optionally available in inexpensive preferred colours, as well as in RAL to choose or special colours (for further information, see page 18). The VarioFix frame can be used with flush or rebated door leaves and can be supplied with concealed hinges and with an elegant stainless steel lock plate on request. As a less expensive alternative, a primed surface with spot-welded mitre corners is also available.



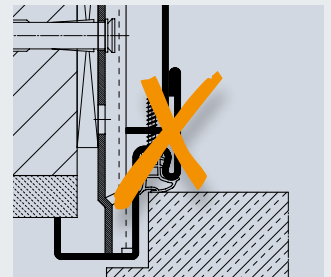
VarioFix frame without visible mitre



Timber frame with visible mitres



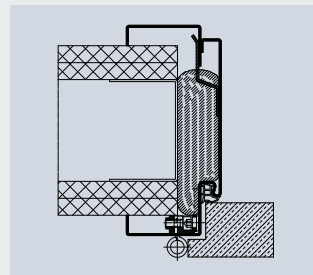
Optionally in inexpensive preferred colours, as well as in RAL to choose or special colours **INNEW**



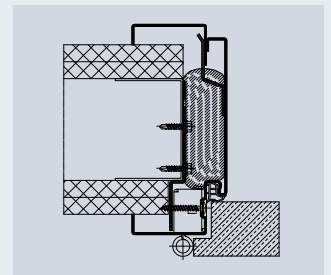
An additional unattractive foldback is avoided

Simple fitting

The VarioFix frame can be fitted to all wall types without screws, using the new Hörmann 2C fitting foam, like a timber frame. This results in a **time saving of up to 50 %** during fitting. With adjustment in the decorative rebate, **it compensates for wall tolerances of up to 20 mm** (– 5 to + 15 mm). The frame is designed for use in partition walls with glass, timber or steel door leaves up to 50 kg, with an additional adapter on the hinge side up to 80 kg. For solid walls or timber posts, door leaf weights of up to 120 kg can be used, taking into account the hinge system with chamfered fastening.



Fitting in partition walls, rebated without adapter up to 50 kg door leaf weight



Fitting in partition walls, rebated with adapter up to 80 kg door leaf weight

Fast delivery times

The VarioFix frame in the primed version and powder-coated in Traffic white RAL 9016 is available within 6 working days or ready for collection from the factory at any time in 48 standard sizes and 6 wall widths. The wall widths 100, 125, 150, 175, 205 and 270 mm are adjusted to fitting in partition walls or brickwork.



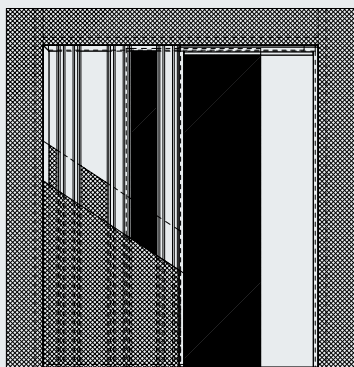
* Same as steel frames fitted with mortar

** As standard double-shell steel frames

*** Working days: Monday to Friday with the exception of bank holidays

Sliding doors

In an exclusive design, running in front of and within the wall

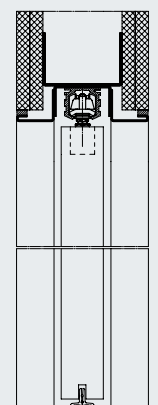


Sliding door, box design with panel

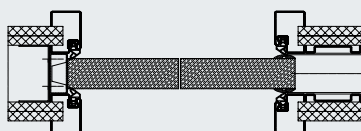
When it comes down to square meters, sliding doors are an ideal solution. The sliding door fitting is long-lasting and moves very easily. Optionally available with a lintel damper on one or both sides and with an operator.

Applications for frames for sliding doors running within the wall

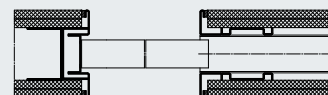
- For all wall types
- For glass and timber doors
- For solid walls with Peridur building slabs as a plaster base made of light and stable rigid foam, joints with reinforcing straps (scope of delivery)
- Sealed with a timber door leaf from wall width 125 mm with acoustic rating class (SK) 2
- With simple cladding for 100 mm wall thickness; double cladding available from a wall thickness of 125 mm



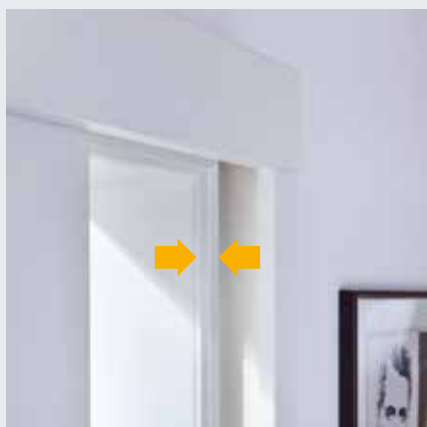
Sliding door frame without face, box design without panel



Sliding door frame running within the wall, sealed



Sliding door frame without face, running within the wall



Sealing profile in the frame for sealed version

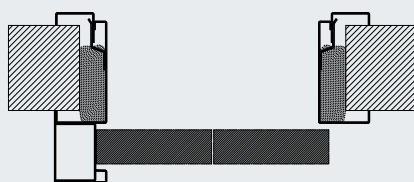


Sliding door frame running in front of the wall, sealed

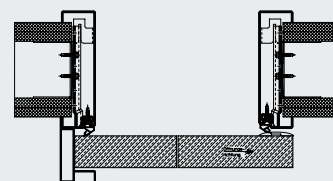
Single-leaf and double-leaf sliding door frames are particularly suitable in limited spaces and for retrofitting as part of modernisation projects.

Applications for frames for sliding doors running in front of the wall

- For all wall types
- For glass and timber doors
- For partition walls and solid walls



VarioFix frame for sliding doors running in front of the wall



Sliding door frame running in front of the wall, sealed

Individual frame types

A broad range for more design possibilities

Colours and surfaces – to meet all your needs

Priming

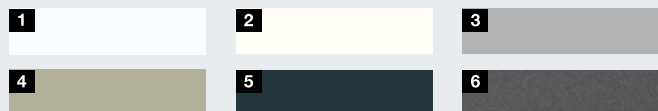
Factory-applied primer ensures optimum protection for the frame and is a good basis for further treatment.

Final powder coating

Plastic powder coating is characterised by an optimum finish and is characterised by high hardness, high elasticity and resistance to impacts, as well as lasting gloss and colour.

Preferred colours *//NEW*

Steel frames are available with powder-coated primer in Grey white RAL 9002 as standard. The frames are optionally available in 6 inexpensive preferred colours, as well as in RAL to choose or special colours.



- 1 RAL 9016 Traffic white
- 2 RAL 9010 Pure white
- 3 RAL 9006 White aluminium
- 4 RAL 7035 Light grey
- 5 RAL 7016 Anthracite grey
- 6 CH 703 Anthracite



Stainless steel versions

Frames made of stainless steel (V2 A / V4 A) are the number one choice when high demands are placed on the resistance of the frame surface to external influences.

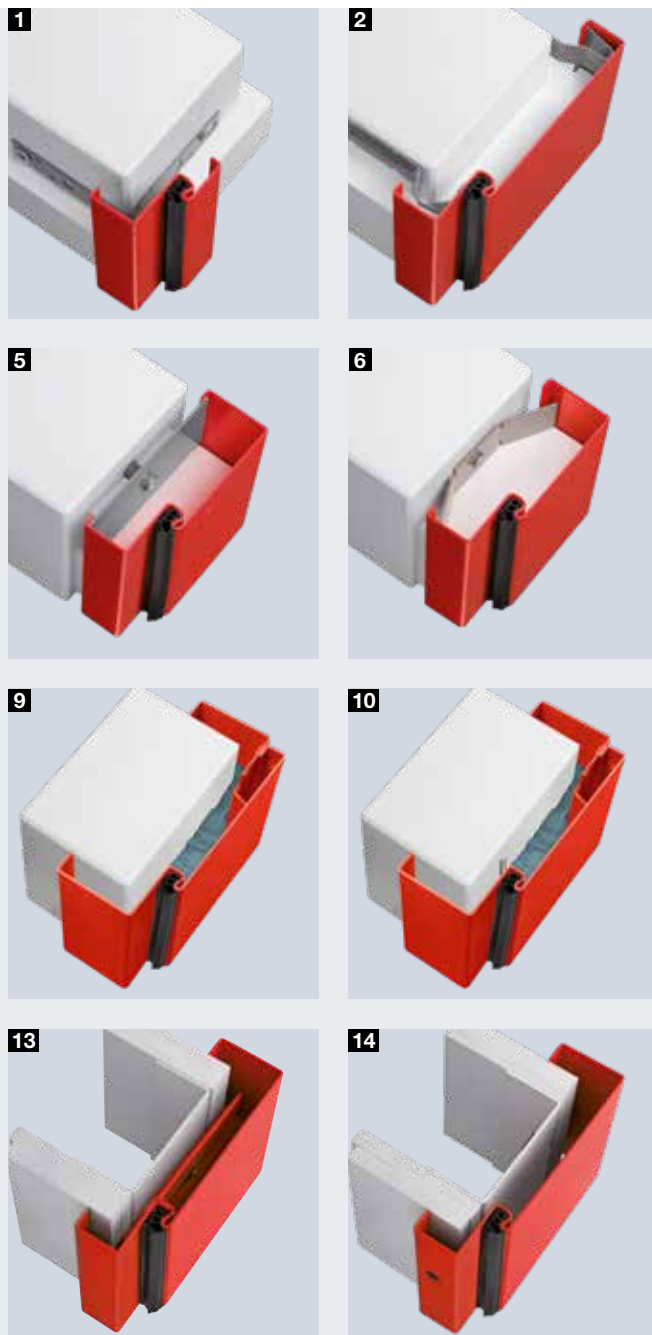
Safe transport packaging

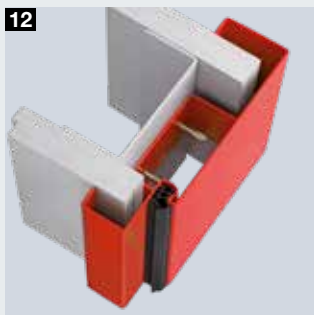
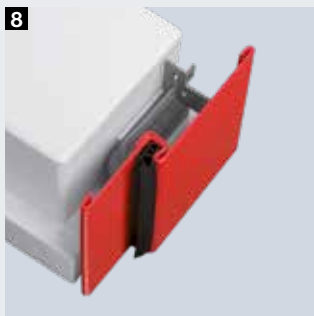
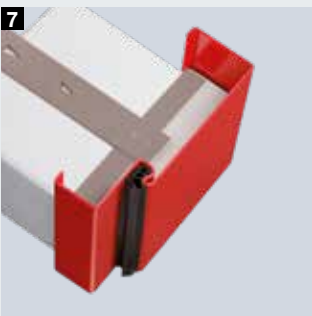
All powdered steel frames are generally delivered in sturdy transport packaging. This consists of cardboard or bubble wrap for individual frames. Several frames are transported lying on pallets.



Primed frames to screw or clamp are delivered wrapped in film or optionally in a sturdy and stackable cardboard box.

Example: Individual cardboard packaging





Brickwork frames

Corner frame

- 1** Fitting with nail / grouting lugs

Profile frames

- 2** Fitting with nail / grouting lugs and quick anchors
- 3** Double-shell for retrofitting, fitting with trapezoidal anchor
- 4** Plug-and-screw fitting and recessed drill holes in the reveal
- 5** Plug-and-screw fitting through the reveal with hole and cover cap
- 6** Fitting with propeller anchor
- 7** Fitting with sliding anchor

Frame without face

- 8** With small viewed width, fitting with trapezoidal anchor

Profile frame VarioFix

- 9** Double-shell for retrofitting, fitting with 2C foam
- 10** Double-shell for retrofitting, fitting with chamfered screw connection and 2C foam, for Hörmann residential doors WAT with RC 2 / RC 3 security equipment

Door frames for partition walls

Corner frame

- 11** For retrofitting, 1-part, fitting with 2C foam

Profile frames

- 12** Fitting with grouting lugs
- 13** Double-shell for retrofitting, fitting with trapezoidal anchor
- 14** Fitting with recessed drill holes through the frame face

Frame without face

- 15** With small viewed width, fitting with trapezoidal anchor

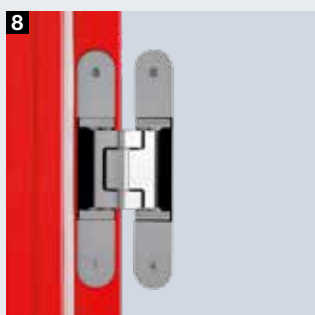
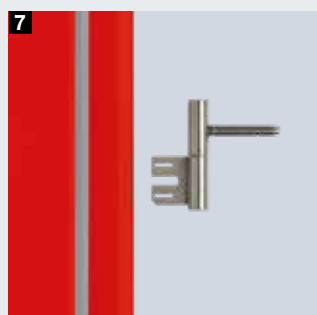
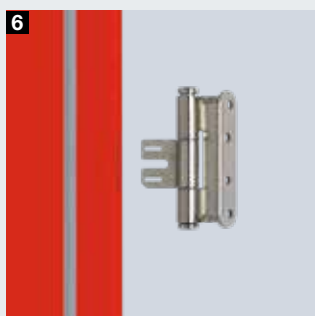
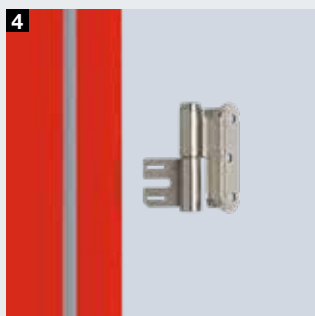
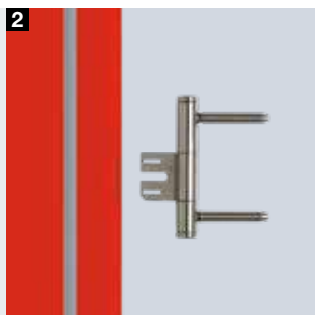
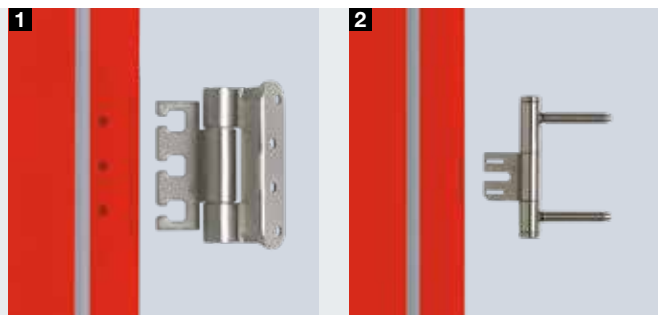
Profile frame VarioFix

- 16** Double-shell for retrofitting, fitting with 2C foam

Hinge constructions

For all demands

**Same hinge systems for brickwork
and partition walls, welded
or to screw or clamp**



Hinge systems

When selecting or defining the suitable hinge system, you must take into account all load factors, such as application area, opening frequency, door stop and door closer, as well as the dimensions of the door leaf used.

- 1 VX 7939 / 100**
(loading capacity up to 100 kg*)
- 2 V 8026 WF**
(loading capacity up to 70 kg*)
- 3 VX 7939 / 120**
(loading capacity up to 120 kg*)
- 4 V 8130**
(loading capacity up to 60 kg*)
- 5 VX 7939 / 160**
(loading capacity up to 160 kg*)
- 6 V 8037 WF**
(loading capacity up to 70 kg*)
- 7 V 8120**
(loading capacity up to 40 kg*)
- 8 Concealed hinge**
Depending on the version, loading capacity from 40 to 180 kg
- 9 VN 2927 / 160 Compact Planum (frame without face)**
Loading capacity up to 100 kg
VR 120 round-style (shown on page 12)
Loading capacity up to 100 kg

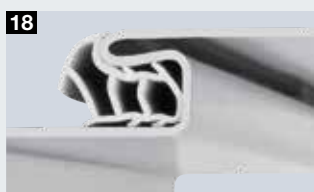
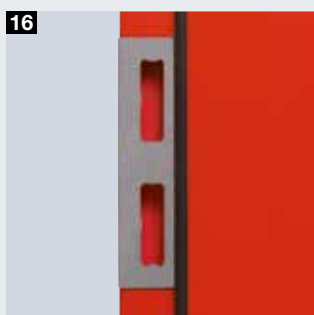
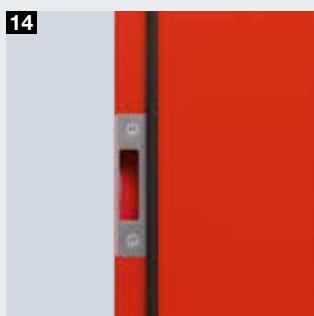
* Load values:

Maximum door leaf weight, taking the load factors into account with a door leaf size of 1000 mm x 2000 mm and using two hinges at a distance of 1435 mm.

Door leaves of up to 60 kg can be fitted when using a standard support element for series V 8000 hinges.

Lock plates and sound-absorbing seals

For optimum closing



Lock plates

- 10 V2 A lock plate**
Flush
- 11 Plastic catch protection plate**
- 12 V2 A latch lock plate**
Rebated (foldback to frame face)
- 13 V2 A lock plate**
Rebated
- 14 V2 A latch lock plate**
Rebated
- 15 V2 A lock plate**
Flush with catch adjustment,
also available in rebated version
- 16 V2 A catch protection plate**
Flush
- 17 V2 A catch protection plate**
Rebated

Sound-absorbing seals

The high-grade, flexible hollow-chamber sound-absorbing seals are easy to insert. They ensure that doors close snugly with hardly a sound. The standard sound-absorbing seal is available in grey, white and black.

- 16 UPVC sound-absorbing seal**
Standard
Optional: UPVC-free TPE seal
- 17 UPVC sound-absorbing seal**
For 20 mm rebate width
- 18 UPVC sound-absorbing seal**
For stainless steel frames
- 19 Special sound-absorbing seal** for higher acoustic
insulation (42 dB instead of 35 dB)
For all frame types

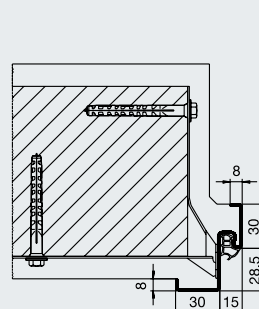
Technical details

Standard sizes

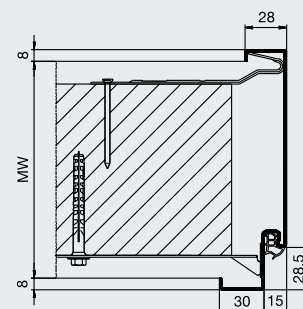
Corner and profile frames

Nominal size		Frame hold dimension		Clear frame dimension	
Width	Height	Width	Height	Width	Height
625	2000	591	1983	561	1968
750	2000	716	1983	686	1968
875	2000	841	1983	811	1968
1000	2000	966	1983	936	1968
625	2125	591	2108	561	2093
750	2125	716	2108	686	2093
875	2125	841	2108	811	2093
1000	2125	966	2108	936	2093

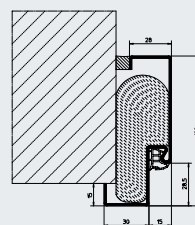
All details in mm,
nominal size = ordering size



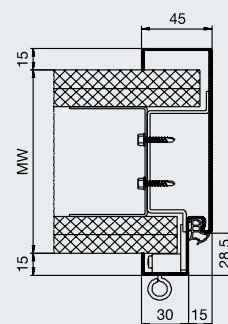
Corner frame for brickwork



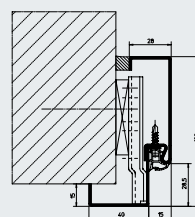
1-part profile frame for brickwork



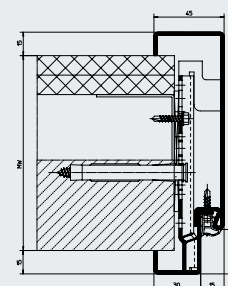
1-part corner frame for
retrofitting in all wall types



1-part profile frame for partition
walls



2-part corner frame for
retrofitting in all wall types

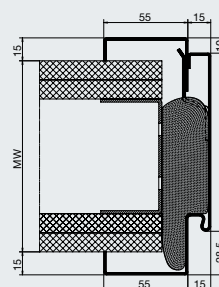


2-part profile frame for all wall
types

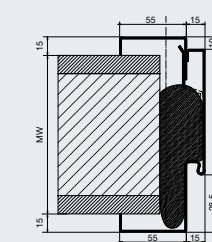
VarioFix steel profile frame for all wall types

Nominal size		Wall widths MW		Wall thickness compensation / adjustment range	
Width	Height				
625	2000	100 125 150	175 205 270	95 – 115 120 – 140 145 – 165	200 – 220 265 – 285
750	2000				
875	2000				
1000	2000	100 125 150	175 205 270	95 – 115 120 – 140 145 – 165	200 – 220 265 – 285
625	2125				
750	2125				
875	2125				
1000	2125				

All details in mm,
nominal size = ordering size



Steel profile frame for partition
walls



Steel profile frame for brickwork
walls

Hörmann Product Range

Everything from a single source
for your construction project



Quick service with testing, maintenance and repairs
Our extensive service network means that we are always nearby and at your service around the clock.



1 Sectional doors



2 Rolling shutters and rolling grilles



3 High-speed doors



4 Loading technology



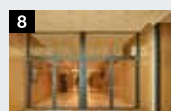
5 Steel and stainless steel sliding doors



6 Steel and stainless steel construction project doors



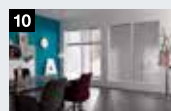
7 Steel frames with high-quality timber function doors from Schörghuber



8 Tubular frame construction project doors



9 Automatic sliding doors



10 Visibility window



11 Collective garage doors



12 Bollards and road blockers



13 Barrier and pay station systems

Hörmann: Quality without Compromise



Hörmann KG Amshausen, Germany



Hörmann KG Antriebstechnik, Germany



Hörmann KG Brandis, Germany



Hörmann KG Brockhagen, Germany



Hörmann KG Dissen, Germany



Hörmann KG Eckelhausen, Germany



Hörmann KG Freisen, Germany



Hörmann KG Ichtershausen, Germany



Hörmann KG Werne, Germany



Hörmann Alkmaar B.V., Netherlands



Hörmann Legnica Sp. z o.o., Poland



Hörmann Beijing, China



Hörmann Tianjin, China



Hörmann LLC, Montgomery IL, USA



Hörmann Flexon LLC, Burgettstown PA, USA



Shakti Hörmann Pvt. Ltd., India

Hörmann is the only manufacturer worldwide that offers you a complete range of all major building products from one source. We manufacture in highly-specialised factories using the latest production technologies. The close-meshed network of sales and service companies throughout Europe, and activities in the USA and Asia, make Hörmann your strong partner for first-class building products, offering “Quality without Compromise”.

GARAGE DOORS
OPERATORS
INDUSTRIAL DOORS
LOADING EQUIPMENT
HINGED DOORS
DOOR FRAMES

HÖRMANN